

Let's Open Doors Together



With 50 years of experience, and more than 1,200 successful tenants, Indwell has both the capacity to deliver new supportive housing and the expertise to make it successful. In London, we've transitioned over 200 Londoners from homelessness or precarious housing to their own apartment homes, where they're welcomed as part of a community.

Join us as we continue to open new doors in our community to those who need it most.

Transforming the Health Services Building

The Health Services Building opened in 1921 as Western University's medical school, and laid the foundation for how we care for each other for generations to follow. With your help, Indwell will transform this beautiful heritage building into 96 new apartment homes.

Supportive housing is a permanent solution to homelessness

Homelessness and the lack of affordable housing is threatening the lives of hundreds of men, women and even children, and generating costly cycles of hospitalization and policing.

Permanent housing with onsite supports – like nursing, addictions counseling, and food security support – help people remain stably housed, improve their health, forge relationships, and gain a sense of belonging.



VISION SOHO

Your gift will save lives

A permanent end to homelessness



Across all Indwell programs, 92% of tenants remain housed year over year.

“I’m thankful to have a beautiful apartment where the rent is affordable, where I have control and autonomy with support. The Indwell staff is very gracious and supportive...and a light in the darkness.”

– Shannon, Indwell tenant since 2019

Housing is healthcare



“About 30% of our beds are occupied by individuals who no longer need hospital care but have no discharge environment that could adequately support their needs. Many of these individuals would be well served by the model Indwell has established.”

– Jodi Younger, Vice-President, Patient Care & Quality, St. Joseph's Health Care London

Improved community safety



“Thanks to a recent partnership between Indwell and the City of St. Thomas, we have already experienced an 80%+ reduction in police occurrences in the downtown core. Bringing together community and partners like Indwell is vital in providing the appropriate resources to ensure citizens facing societal vulnerabilities have the supports they deserve.”

– Chief Chris Herridge (retired), St. Thomas Police Service London

Better health and wellness for our tenants



A sample of 45 Indwell tenants experienced a 50% reduction in Emergency

Department visits during the 18 months following their move into an Indwell program, compared to the previous 18 months.

Together, we're opening doors in London

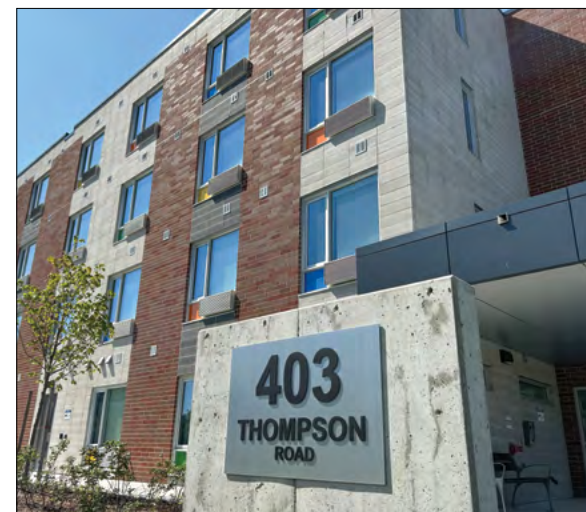
Indwell provides 182 units of supportive, affordable housing, with 92 more under construction.



Woodfield Gate, 66 units, 2019



Embassy Commons, 72 units, 2022



Thompson Road Apartments, 44 units, 2023
(in partnership with the City of London)



46 Elmwood Place, 50 units, opening 2025



War Memorial Children's Hospital,
42 units, opening 2026

For 50 years Indwell has been providing supportive housing that transforms lives. Every door we open together becomes a solution to homelessness.

From hospital to home – a legacy of health

In 1921, Western University opened a new medical school where hundreds of doctors studied and trained, laying the foundation for a legacy of health care providers that endures to this day. The building has large windows around the entire structure, high ceilings, and wide halls with gorgeous terrazzo floors. The medical school moved in 1965, and the building served as office space until it closed in 2013.

Indwell will convert this historic building into 96 studio, one- and two-bedroom apartments for tenants referred from the City of London's priority housing list.

The former auditorium will become a community food hub, offering food security programming to the entire Vision SoHo community. We are eager to transform this heritage building into a centre of care and community again.

Your gift leverages additional funding

Your gift will allow us to mobilize additional government funding. For every dollar we receive from the community, we can leverage up to \$7 in government funds.

SPECIAL GIVING LEVELS

\$500

Open a door

\$3,500

Furnish an apartment

\$8,000

Provide light with new windows for one apartment

\$50,000

when leveraged 7x with government funds

100 Londoners - Build a unit

\$100,000

when leveraged 7x with government funds

Build and furnish a common space



How to give

- Online at www.indwell.ca/soho - scroll down to "Fund this project".
- By phone at 1-866-529-0454 x283.
- By mail. Send your cheque made to Indwell to 1430 Main St E, Hamilton, ON L8K 1C3. Add "London SoHo project" to the memo section.
- Through a gift of securities.

Contact Julie Ryan
at jryan@indwell.ca or
519-286-1390 x364 for more
information.

ABOUT INDWELL - Indwell is a Christian charity that creates affordable housing communities that support people seeking health, wellness and belonging. Through strong community and governmental partnerships, we are moving people off the streets and into their own homes, where they can live with stability and dignity.