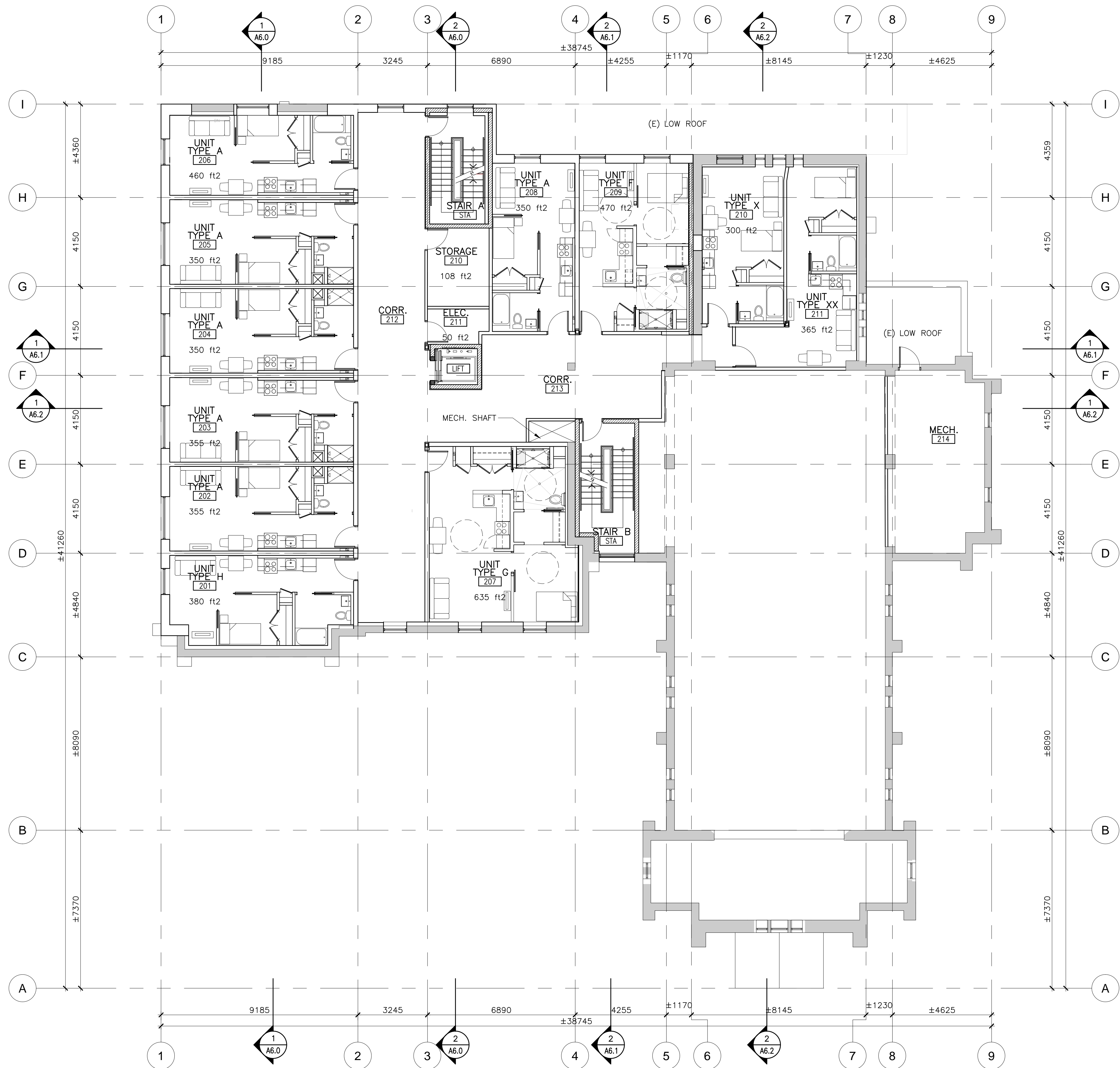




A3.0





SECOND FLOOR PLAN 1
SCALE: 1:100 A3.2

SECOND FLOOR
11 UNITS/ 2BF
6,110ft2/floor

GENERAL NOTES:

1. FIRE RATED WALLS ASSEMBLIES ARE TO BE CONSTRUCTED AS CONTINUOUS FIRE SEPARATIONS AND TO BE TERMINATED AT INTERSECTION WITH ANOTHER FIRE SEPARATION OR A RATED MATERIAL. ALL PENETRATIONS TO BE SEALED W/FIRE STOP SEALANT AS REQUIRED.
2. REFER TO LIFE SAFETY DRAWING FOR LOCATION OF FIRE SEPARATIONS. ALL OPENINGS WITHIN A RATED ASSEMBLY ARE TO BE RATED OR PROTECTED OPENINGS.

NOTES

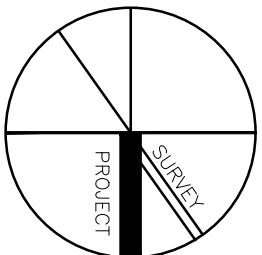
- C-01 CAST-IN-PLACE CONC STEPS
- C-02 REFER TO DRAWING A0.2 FOR FIRE RESISTANT RATED ENCLOSURES FOR STEEL POSTS
- C-03 SUNKEN WINDOW WELL C/W GRAVEL INFILL AND SUB-DRAIN TIED TO BUILDING SUMP.
- C-04 RECESSED ELECTRICAL ELEMENT REFER TO ELEC.
- C-05 FIRE ALARM PANEL. REFER TO ELEC.
- C-06 FIRE DEPT. CONNECTION. REFER TO MECH.
- C-07 MAILBOXES
- C-08 RATED SERVICE SHAFT
- C-09 ELEVATOR PIT LADDER
- C-10 MECHANICAL ELEMENT C/W SUPPORT FRAMING. REFER TO MECH. & STRUCT.
- C-11 INSULATED ROOF DOG HOUSE FOR MECH. CONTROL FEEDERS.
- C-12 ROOF DRAIN. REFER TO MECH DWG.
- C-13 ROOF CRICKET
- C-14 ROOF SCUPPER
- C-15 ROOF WALKWAY. DIFFERENT COLOURED CAP SHEET TO BE USED TO DISTINGUISH WALKWAY FROM ROOF.
- C-16 INSULATED ROOF ACCESS HATCH. SIZE 1220x1220
- C-17 T/O ELEVATOR SHAFT.
- C-18 WASHERS AND DRYERS SUPPLIED & INSTALLED BY OWNER
- C-19 AREA WELL OPEN TO ABOVE
- C-20 CARD READER. REFER TO ELEC.
- C-21 AUTOMATIC DOOR OPERATOR
- C-22 RAIN WATER LEADER. COLOUR TO SELECTED BY CONSULTANT FROM MANUFACTURER'S STANDARD RANGE REFER TO MECH. DRAWINGS
- C-23 PRE-FABRICATED SHOWER/TUB ENCLOSURE. REFER TO MECH.
- C-24 LINE OF FOOTING BELOW (SHOWN DASHED). REFER TO STRUCT.
- C-25 CONTINUOUS THERMAL INSULATION
- C-26 WEEPING TILE
- C-27 SUMP PUMP. PREFABRICATED SUMP PUMP PIT TO HAVE 100 XPS INSULATION SECURED TO U/S OF LID WITH ADHESIVE. FLOOR VAPOUR BARRIER TO BE TAPED AND SEALED TO SIDE OF SUMP WITH CONTINUOUS SEALANT.
- C-28 FURNITURE BY OWNER.
- C-29 FROST SLAB



INVIZIJ
Architects Inc.

185 YOUNG STREET,
HAMILTON, ON L8N 1V9
T: 905 525 9000 | invizij.ca

REV.	DESCRIPTION	DATE
5	CLIENT REVIEW	JUNE 5/20
4	ISSUED FOR PRICING	DEC 06/19
3	ISSUED FOR COORDINATION	NOV 07/19
2	ISSUED FOR COORDINATION	OCT 10/19
1	ISSUED FOR COORDINATION	SEP 24/19



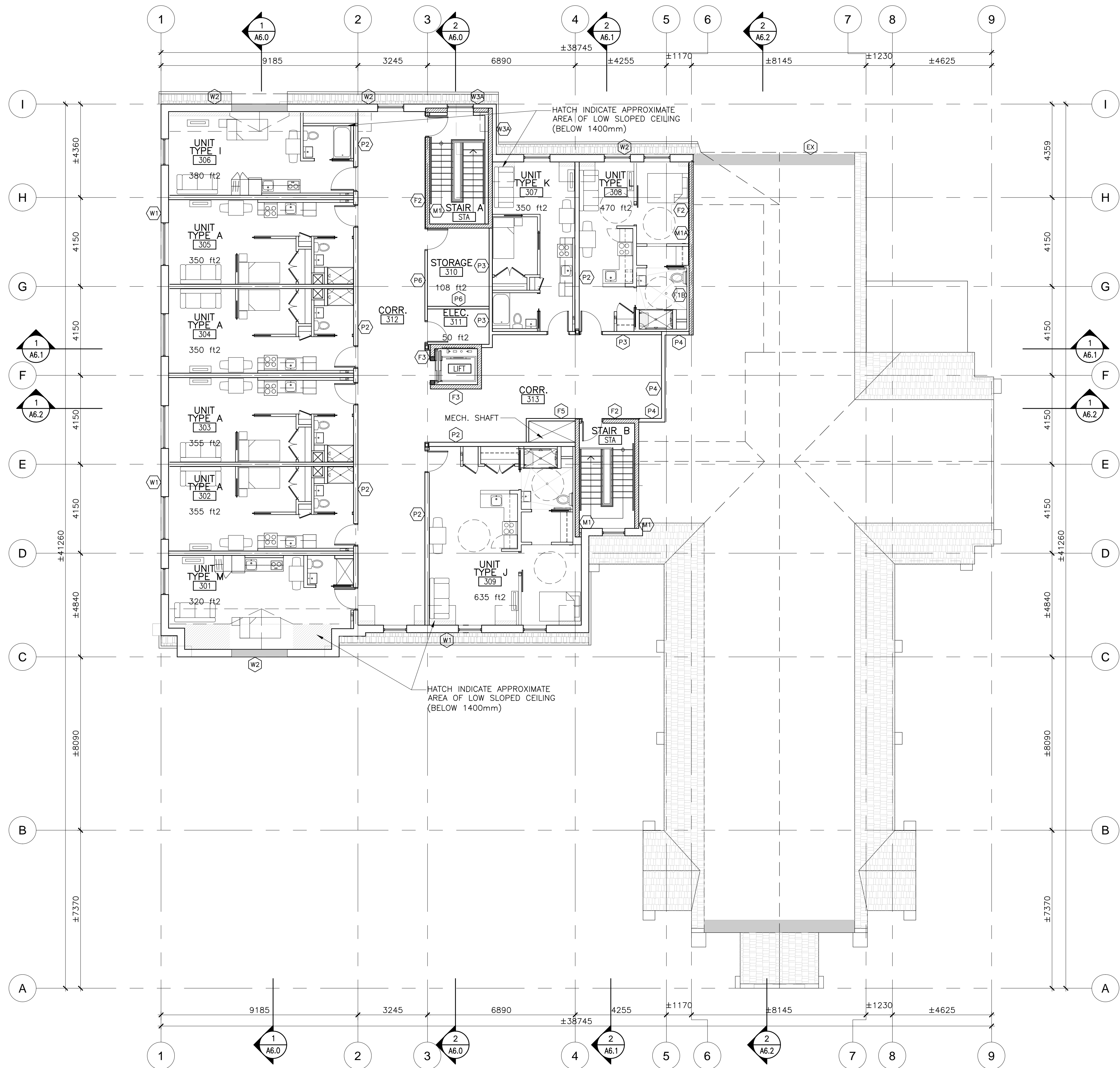
DO NOT SCALE. DRAWING. DIMENSIONS ARE TO BE CHECKED AND VERIFIED BY THE CONTRACTOR ON SITE.

ALL DRAWINGS, SPECIFICATIONS, AND RELATED DOCUMENTS ARE THE COPYRIGHT PROPERTY OF THE ARCHITECT AND MUST BE RETURNED UPON REQUEST. REPRODUCTION OF DRAWINGS, SPECIFICATIONS, AND RELATED DOCUMENTS IN WHOLE OR IN PART IS STRICTLY FORBIDDEN WITHOUT THE ARCHITECT'S WRITTEN PERMISSION.

THIS DRAWING SHALL NOT BE USED FOR CONSTRUCTION PURPOSES UNLESS COUNTERSIGNED BY INVIZIJ ARCHITECTS INC.

PROJECT NAME:	ST. MARK'S CHURCH CONVERSION
PROJECT ADDRESS:	825 KING ST. WEST, KITCHENER, ONTARIO
PROJECT NO.:	19-018
DRAWING TITLE:	SECOND FLOOR PLAN
PLOT DATE:	19-Jun-20
DRWN.:	NB
CHKD.:	EC
DATE:	APR 2019
SCALE:	1:100
DRAWING NO.:	

A3.2



THIRD FLOOR PLAN 1
SCALE: 1:100 A3.3

THIRD FLOOR
9 UNITS (2BF)
6,110ft2

GENERAL NOTES:

1. FIRE RATED WALLS ASSEMBLIES ARE TO BE CONSTRUCTED AS CONTINUOUS FIRE SEPARATIONS AND TO BE TERMINATED AT INTERSECTION WITH ANOTHER FIRE SEPARATION OR A RATED MATERIAL. ALL PENETRATIONS TO BE SEALED W/FIRE STOP SEALANT AS REQUIRED.
2. REFER TO LIFE SAFETY DRAWING FOR LOCATION OF FIRE SEPARATIONS. ALL OPENINGS WITHIN A RATED ASSEMBLY ARE TO BE RATED OR PROTECTED OPENINGS.

NOTES

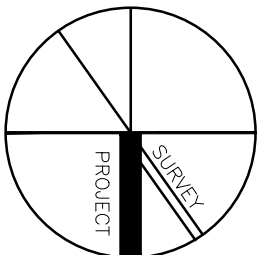
- C-01 CAST-IN-PLACE CONC STEPS
- C-02 REFER TO DRAWING A0.2 FOR FIRE RESISTANT RATED ENCLOSURES FOR STEEL POSTS
- C-03 SUNKEN WINDOW WELL C/W GRAVEL INFILL AND SUB-DRAIN TIED TO BUILDING SUMP.
- C-04 RECESSED ELECTRICAL ELEMENT REFER TO ELEC.
- C-05 FIRE ALARM PANEL. REFER TO ELEC.
- C-06 FIRE DEPT. CONNECTION. REFER TO MECH.
- C-07 MAILBOXES
- C-08 RATED SERVICE SHAFT
- C-09 ELEVATOR PIT LADDER
- C-10 MECHANICAL ELEMENT C/W SUPPORT FRAMING. REFER TO MECH. & STRUCT.
- C-11 INSULATED ROOF DOG HOUSE FOR MECH. CONTROL FEEDERS.
- C-12 ROOF DRAIN. REFER TO MECH DWG.
- C-13 ROOF CRICKET
- C-14 ROOF SCUPPER
- C-15 ROOF WALKWAY. DIFFERENT COLOURED CAP SHEET TO BE USED TO DISTINGUISH WALKWAY FROM ROOF.
- C-16 INSULATED ROOF ACCESS HATCH. SIZE 1220x1220
- C-17 T/O ELEVATOR SHAFT.
- C-18 WASHERS AND DRYERS SUPPLIED & INSTALLED BY OWNER
- C-19 AREA WELL OPEN TO ABOVE
- C-20 CARD READER. REFER TO ELEC.
- C-21 AUTOMATIC DOOR OPERATOR
- C-22 RAIN WATER LEADER. COLOUR TO SELECTED BY CONSULTANT FROM MANUFACTURER'S STANDARD RANGE REFER TO MECH. DRAWINGS
- C-23 PRE-FABRICATED SHOWER/TUB ENCLOSURE. REFER TO MECH.
- C-24 LINE OF FOOTING BELOW (SHOWN DASHED). REFER TO STRUCT.
- C-25 CONTINUOUS THERMAL INSULATION
- C-26 WEEPING TILE
- C-27 SUMP PUMP. PREFABRICATED SUMP PUMP PIT TO HAVE 100 XPS INSULATION SECURED TO U/S OF LID WITH ADHESIVE. FLOOR VAPOUR BARRIER TO BE TAPED AND SEALED TO SIDE OF SUMP WITH CONTINUOUS SEALANT.
- C-28 FURNITURE BY OWNER.
- C-29 FROST SLAB



INVIZIJ
Architects Inc.

185 YOUNG STREET,
HAMILTON, ON L89 1V9
T: 905 525 9000 | invizij.ca

REV.	DESCRIPTION	DATE
4	ISSUED FOR PRICING	DEC 06/19
3	ISSUED FOR COORDINATION	NOV 07/19
2	ISSUED FOR COORDINATION	OCT 10/19
1	ISSUED FOR COORDINATION	SEP 24/19



DO NOT SCALE. DRAWING. DIMENSIONS ARE TO BE CHECKED AND VERIFIED BY THE CONTRACTOR ON SITE.

ALL DRAWINGS, SPECIFICATIONS, AND RELATED DOCUMENTS ARE THE COPYRIGHT PROPERTY OF THE ARCHITECT AND MUST BE RETURNED UPON REQUEST. REPRODUCTION OF DRAWINGS, SPECIFICATIONS, AND RELATED DOCUMENTS IN WHOLE OR IN PART IS STRICTLY FORBIDDEN WITHOUT THE ARCHITECT'S WRITTEN PERMISSION.

THIS DRAWING SHALL NOT BE USED FOR CONSTRUCTION PURPOSES UNLESS COUNTERSIGNED BY INVIZIJ ARCHITECTS INC.

PROJECT NAME:	ST. MARK'S CHURCH CONVERSION
PROJECT ADDRESS:	825 KING ST. WEST, KITCHENER, ONTARIO
PROJECT NO.:	19-018
DRAWING TITLE:	THIRD FLOOR PLAN
PLOT DATE:	19-Jun-20
DRWN.:	NB
CHKD.:	EC
DATE:	APR 2019
SCALE:	1:100
DRAWING NO.:	

A3.3